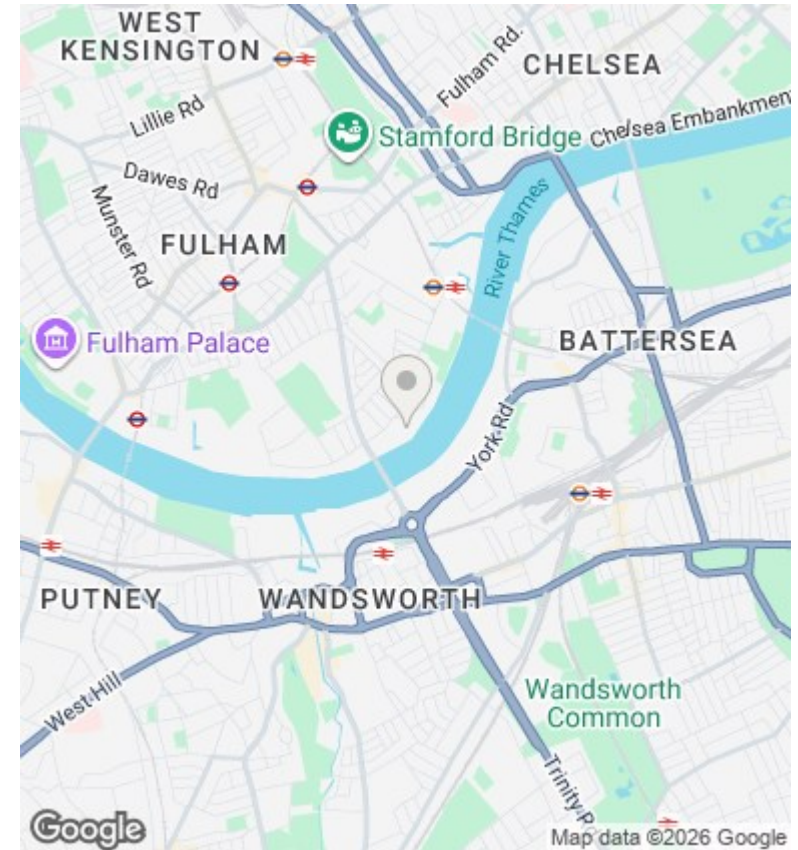
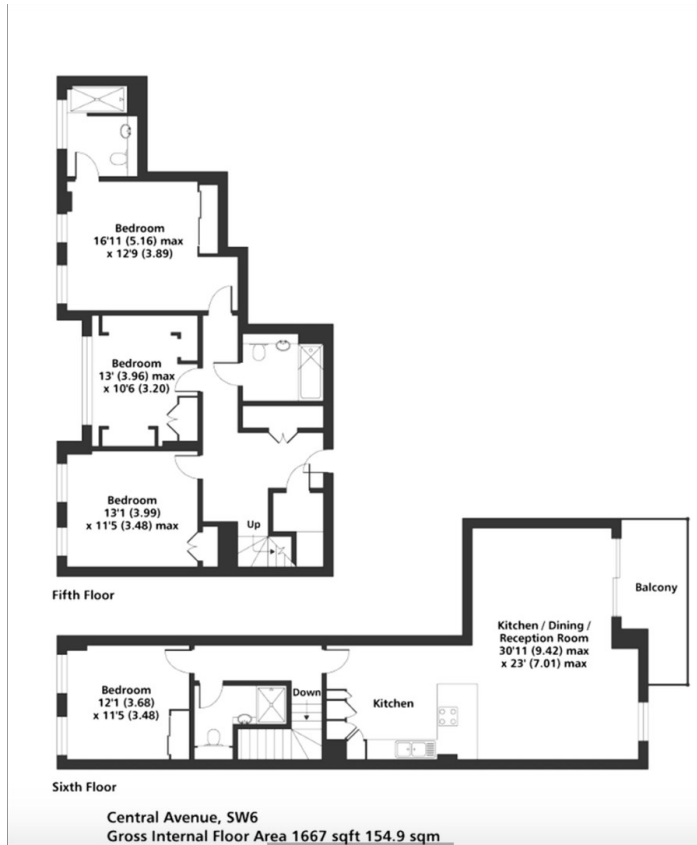




Ravensbourne Apartments, Fulham Riverside, 5 Central Avenue, SW6 2GN

£6,000 Per Month

- Riverside development
- Four double bedrooms
- On-site fitness center
- Vibrant local amenities
- Spacious open-plan layout
- Modern en-suite bathrooms
- Communal landscaped garden
- Private balcony views
- 24/7 concierge service
- Close to transport



Viewings

Viewings by arrangement only.
Call 02077225022 to make an appointment.

Council Tax Band

H

EPC Rating:

B

Energy Efficiency Rating		
	Current	Potential
Very energy efficient - lower running costs		
(92 plus) A		
(81-91) B	84	84
(69-80) C		
(55-68) D		
(39-54) E		
(21-38) F		
(1-20) G		
Not energy efficient - higher running costs		
England & Wales	EU Directive 2002/91/EC	